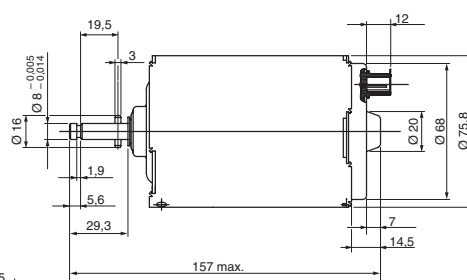
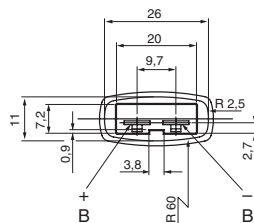
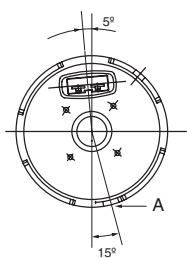
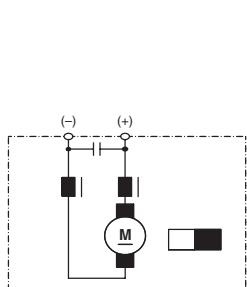
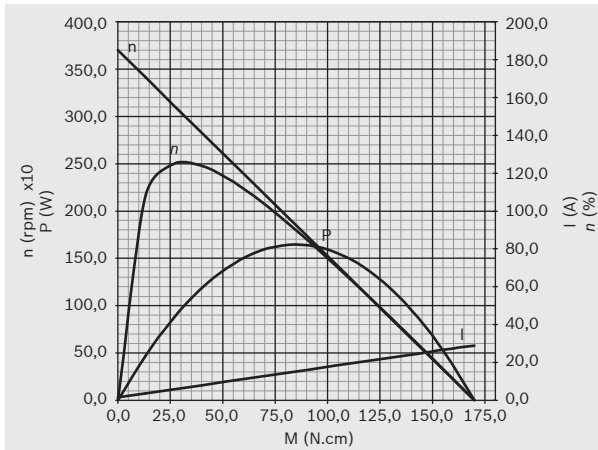


DPG

24 V 90 W



U_N	24 V
P_N	90 W
n_N	3.000 rpm
I_N	8 A
M_A	170 N.cm
Rot.	R
S	S1
IP	IP 23
kg	1,490 kg
	9 130 451 116



A Furo de dreno
Orificio de dreno
Drain hole

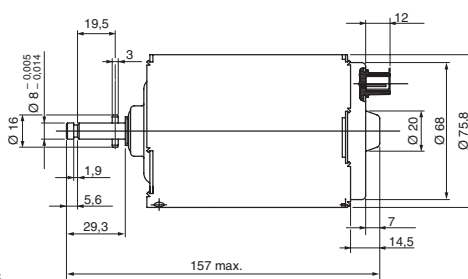
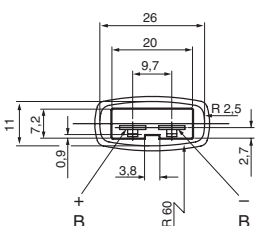
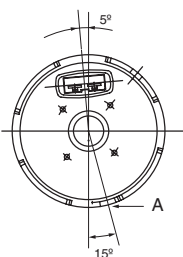
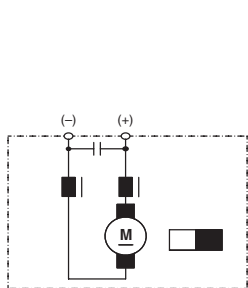
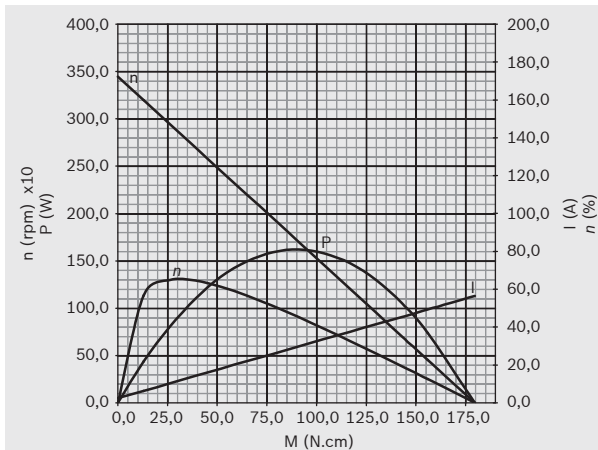
B Terminais 6,3 x 0,8
Terminales 6,3 x 0,8
Terminals 6,3 x 0,8

DPG

12 V 100 W



U_N	12 V
P_N	100 W
n_N	2.700 rpm
I_N	13 A
M_A	180 N.cm
Rot.	R
S	S1
IP	IP 23
kg	1,490 kg
	9 130 451 117



A Furo de dreno
Orificio de dreno
Drain hole

B Terminais 6,3 x 0,8
Terminales 6,3 x 0,8
Terminals 6,3 x 0,8



DPG